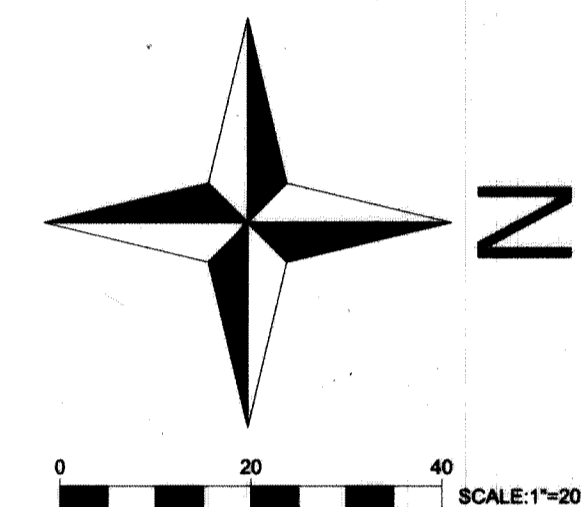


CABANA COLONY GAS STATION AND CAR WASH, A P.U.D.

BEING A REPLAT OF A PORTION OF LOTS A-10 AND A-11,
PALM BEACH CABANA COLONY COMMERCIAL AREA,
ACCORDING TO THE PLAT THEREOF, RECORDED IN
PLAT BOOK 27, PAGE 59 OF THE PUBLIC RECORDS OF PALM BEACH COUNTY, FLORIDA,
LYING IN SECTION 31, TOWNSHIP 41 SOUTH, RANGE 43 EAST,
CITY OF PALM BEACH GARDENS, PALM BEACH COUNTY, FLORIDA

65

SHEET 2 OF 2

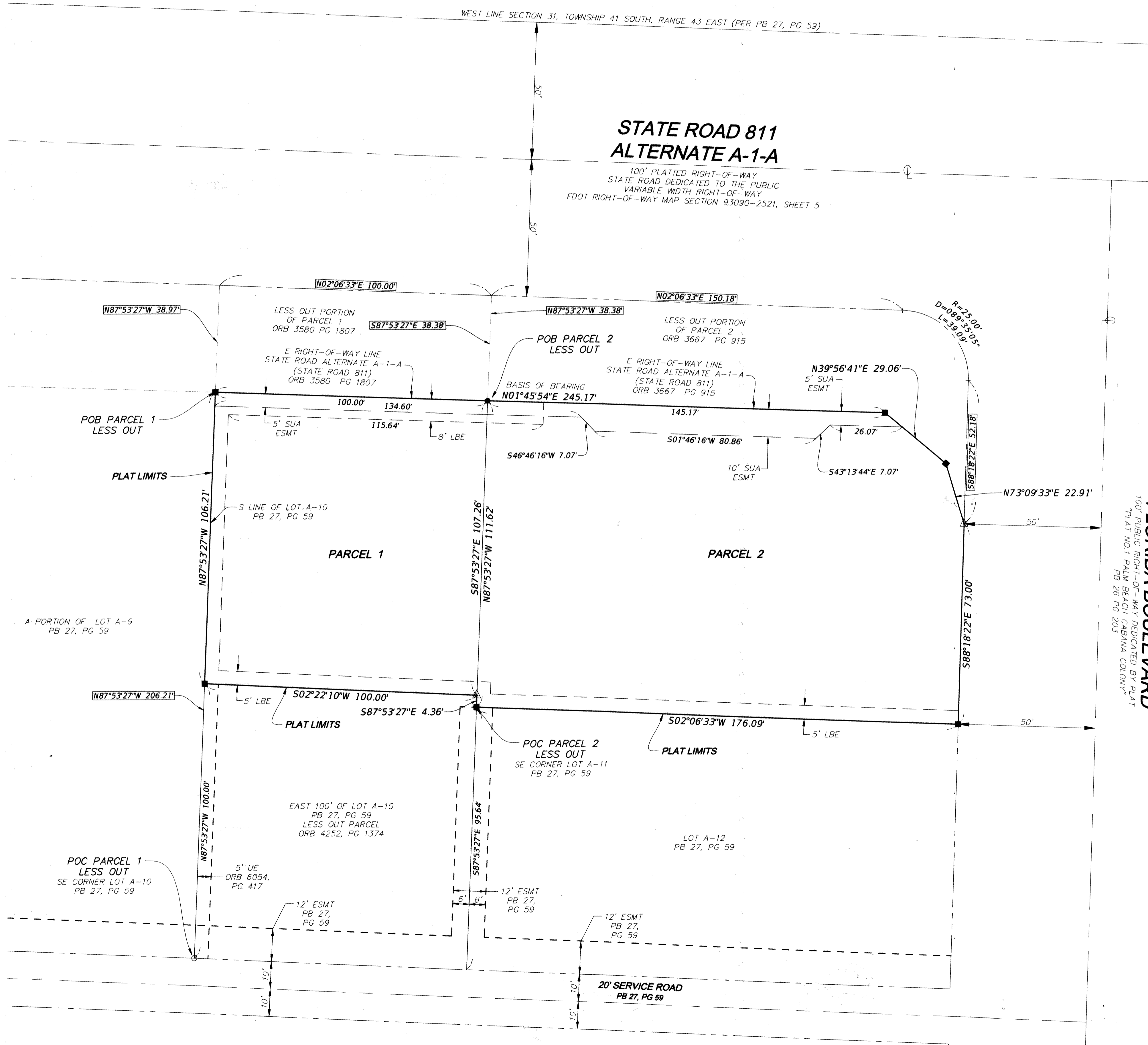


ABBREVIATION LEGEND

ESMT	EASEMENT
LBE	LANDSCAPE BUFFER EASEMENT
ORB	OFFICIAL RECORD BOOK
PB	PLAT BOOK
PG	PAGE
P.U.D.	PLANNED UNIT DEVELOPMENT
SUA	SEACOAST UTILITY AUTHORITY
N90E	DESCRIPTION DATA

SYMBOL LEGEND

- SET 4"x4" CONCRETE MONUMENT WITH ALUMINUM DISK STAMPED "PRM LB7241"
- SET 5/8" IRON ROD WITH PLASTIC CAP STAMPED "MEI LB 7241"
- △ SET NAIL AND DISK STAMPED "MEI LB7241"



M:\Survey\Survey Projects\2019\2019022000 Cabana Colony\dwg\2019022002 Plat.dwg LAYOUT, Sheet 2 PLOTTED: Aug 15, 2019 - 5:09pm PLOTTED BY: kbeck

THIS INSTRUMENT WAS PREPARED BY KEVIN M. BECK, P.S.M. IN THE OFFICES OF MARLIN ENGINEERING, INC., 10415 RIVERSIDE DRIVE, SUITE 101, PALM BEACH GARDENS, FLORIDA, 33410.

DRAWN BY	LS	DATE	03/19/19
CHECKED BY	KMB	DATE	03/21/19
PROJECT NUMBER:	2019022.002		

MARLIN
ENGINEERING

10415 RIVERSIDE DRIVE, SUITE 101,
PALM BEACH GARDENS, FL 33410
Tel: (561) 229-0239
Fax: (305) 477-7590
L.B. # 7241

SHEET
2 of 2